







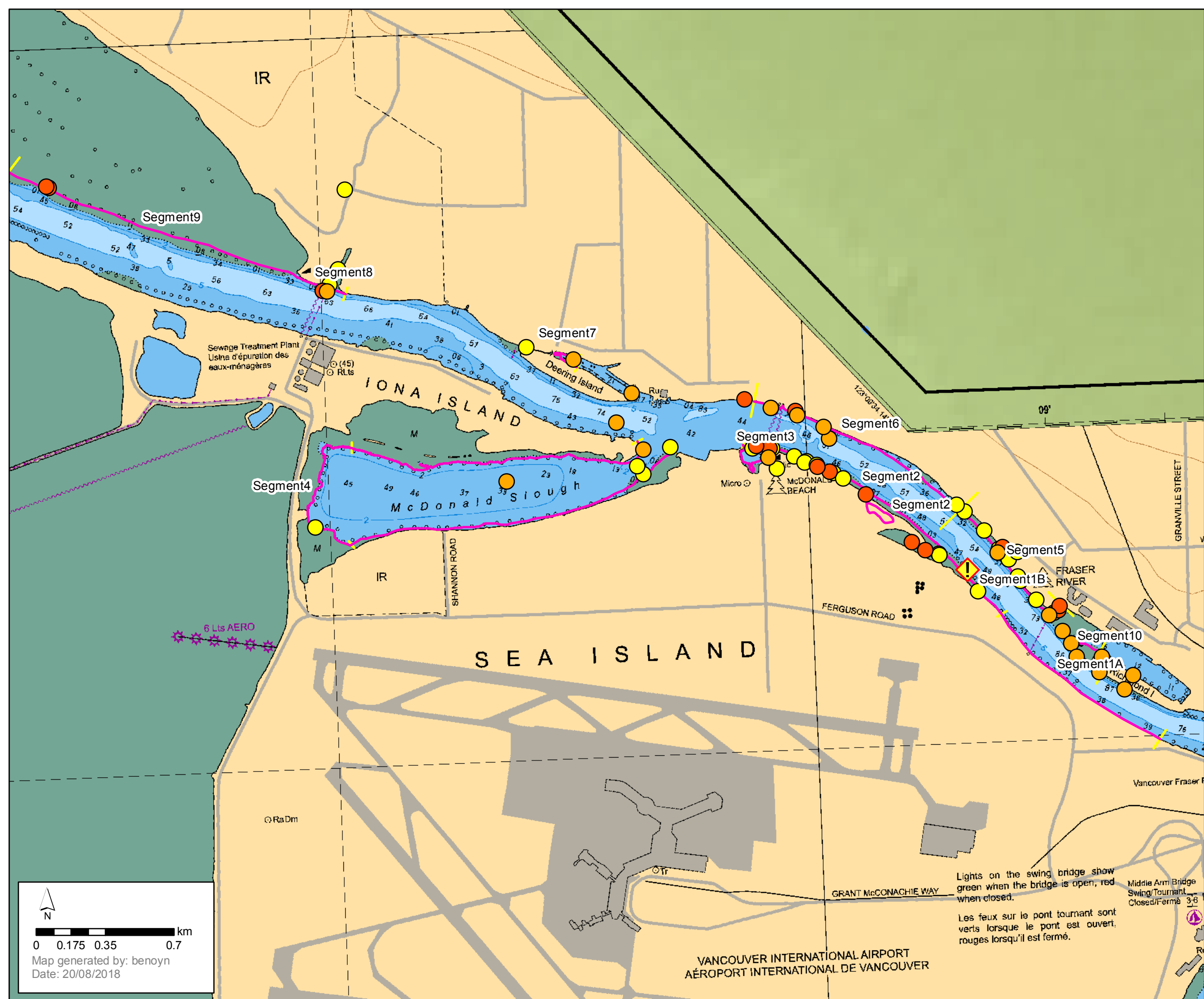
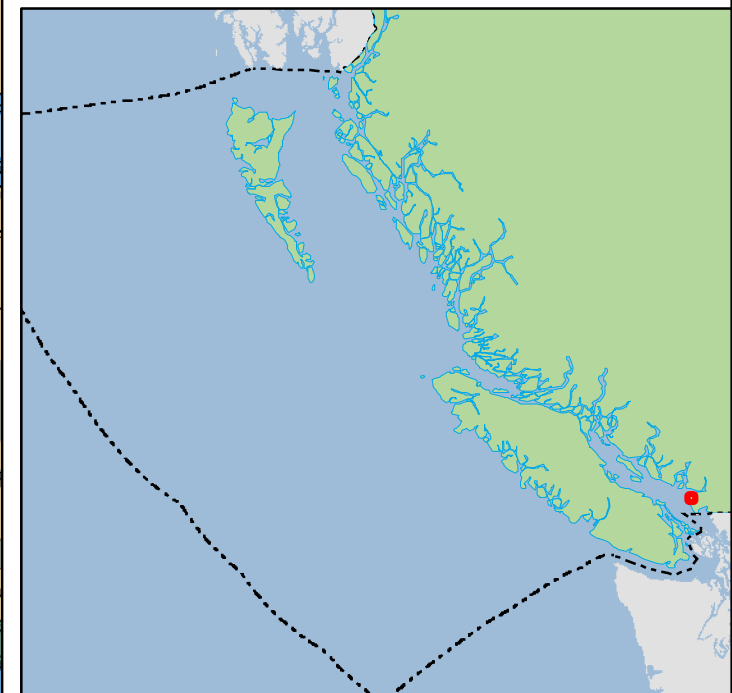
# George H Ledcor Capsize SCAT Waypoints DRAFT

## Features of Interest

-  Incident Location
-  SCAT Segments 2018-08-16 0920
-  SCAT Segment Breaklines 2018-08-15 0920
-  SCAT Team GPS Waypoints 2018-08-17
-  SCAT Team GPS Waypoints 2018-08-16
-  SCAT Team GPS Waypoints 2018-08-15

## Supporting Text

DISCLAIMER: This map is for reference only and is based on the best available information, and is intended for internal DFO use only. This map is not to be used for navigation.



Map generated by: benoyn  
Date: 20/08/2018

Lights on the swing bridge show green when the bridge is open, red when closed.  
Les feux sur le pont tournant sont verts lorsque le pont est ouvert, rouges lorsqu'il est fermé.

Middle Arm Bridge Swing/Tourant  
Closed/Fermé 3-6

VANCOUVER INTERNATIONAL AIRPORT  
AÉROPORT INTERNATIONAL DE VANCOUVER